

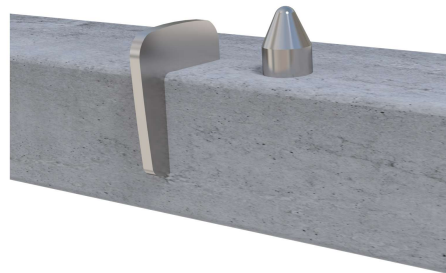
Options

Installation on timber or steel slatted seat: (In order of picture)

- SD1 – Stainless steel edge fitting
- SD2 – Cast bronze edge fitting
- SD3 – Cast aluminium edge fitting
- SD4 – Brass round
- SD5 – Stainless steel round
- SD8 – Stainless steel edge insert, folded plate

Installation on concrete or masonry

- SD6 – Stainless steel insert
- SD7 – Stainless steel edge insert

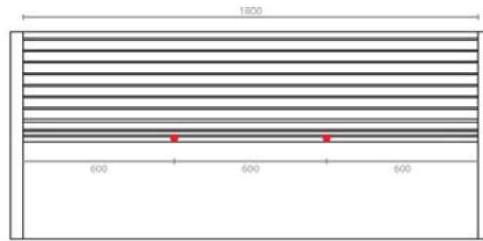


We are happy to advise the correct skateboard deterrent needed for the type of seat ordered. When ordered in conjunction with a seat or bench, we will also install the skateboard deterrents for you.

Recommendations

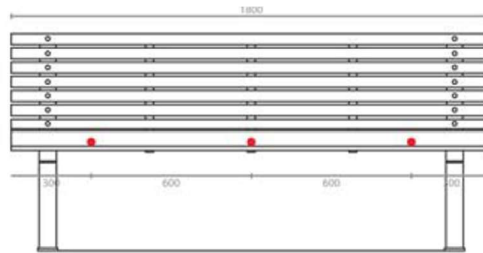
On Seats 1800mm long with Arms:

Recommended number: 2 Installed 600mm from seat sides



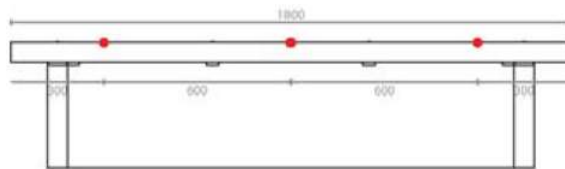
On Seats 1800mm long with No Arms:

Recommended number: 3 Installed 300mm from seat sides & one in the centre



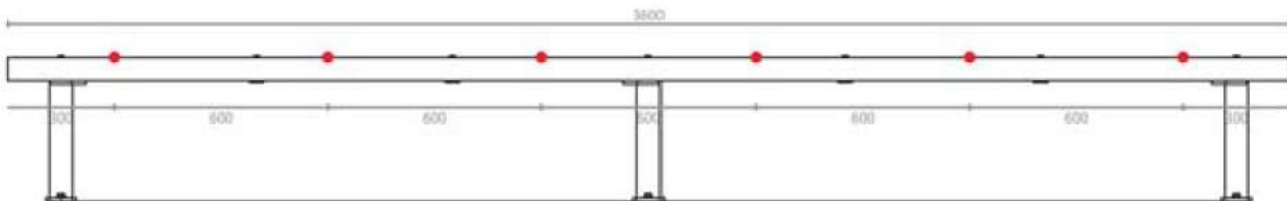
On Benches 1800mm long

Recommended number: 3 per exposed side 300mm from seat sides & one in the centre



On Seats and Benches longer than 1800mm

300mm from seat sides & approx. 600mm apart along centre Per each exposed side



Warning

As each situation is unique, recommendations above are for general reference only. It is the responsibility of the customer to determine the optimum number of skateboard deterrents to be used and to ensure correct installation (unless installed by fel. Group Limited). fel. Group Limited is not responsible should any vandalism occur due to skateboarders.